

Long Scar



Arthur Batty

Long Scar, (2010) © Ed. Anita Batty

Published by Batty and Batty

Front Cover: Looking south along Long Scar
Hut circle No 3 in centre of photo

Photo: Arthur Batty

Acknowledgments

The author would like to thank the following people for their assistance with this report:

Dr John Farrer for allowing access onto his property.

Jeff Price for assistance in surveying.

Anita Batty for editing and desk-top publishing.

Long Scar

The site is situated at approximately 400m OD on limestone moorland with areas of karst pavement and low escarpments (Plate 1). A topographical survey (Fig 1) of the site consists of nine well-defined hut circles and one, No.7, of more questionable definition. Structure No.2 is possibly the best-preserved example of a hut circle found in the Ingleborough area (Plate 2).

There are remains of walls and embankments that suggests most of the hut circles are located within an enclosed area. Scanning with a gradiometer revealed that hut circle No.4 contained an area of burning, possibly a hearth. This feature was cored, revealing one occupation layer, consisting of burnt stones and charcoal. A charcoal sample was sent for radiocarbon dating and gave a date of 810BC to 740BC, around the Bronze Age/Iron Age transition period (Fig 2). A topological survey (Fig 3) shows hut circle No.4 in 3D rendering which is well defined. The structures vary in size from 6m to 9m and all appear to have had low stone walls.

This is the largest number of hut circles found on one site in the area around Ingleborough, apart from the summit of Ingleborough itself. Long Scar may represent a more permanent settlement than the isolated single/double structure sites that may indicate a more transient use. Whether Long Scar is contemporary with the remains on Ingleborough is unknown. As more sites are dated at this elevation, and further information gathered i.e. pollen analysis and climatic information, a clearer picture of population and land use in the area will be obtained.

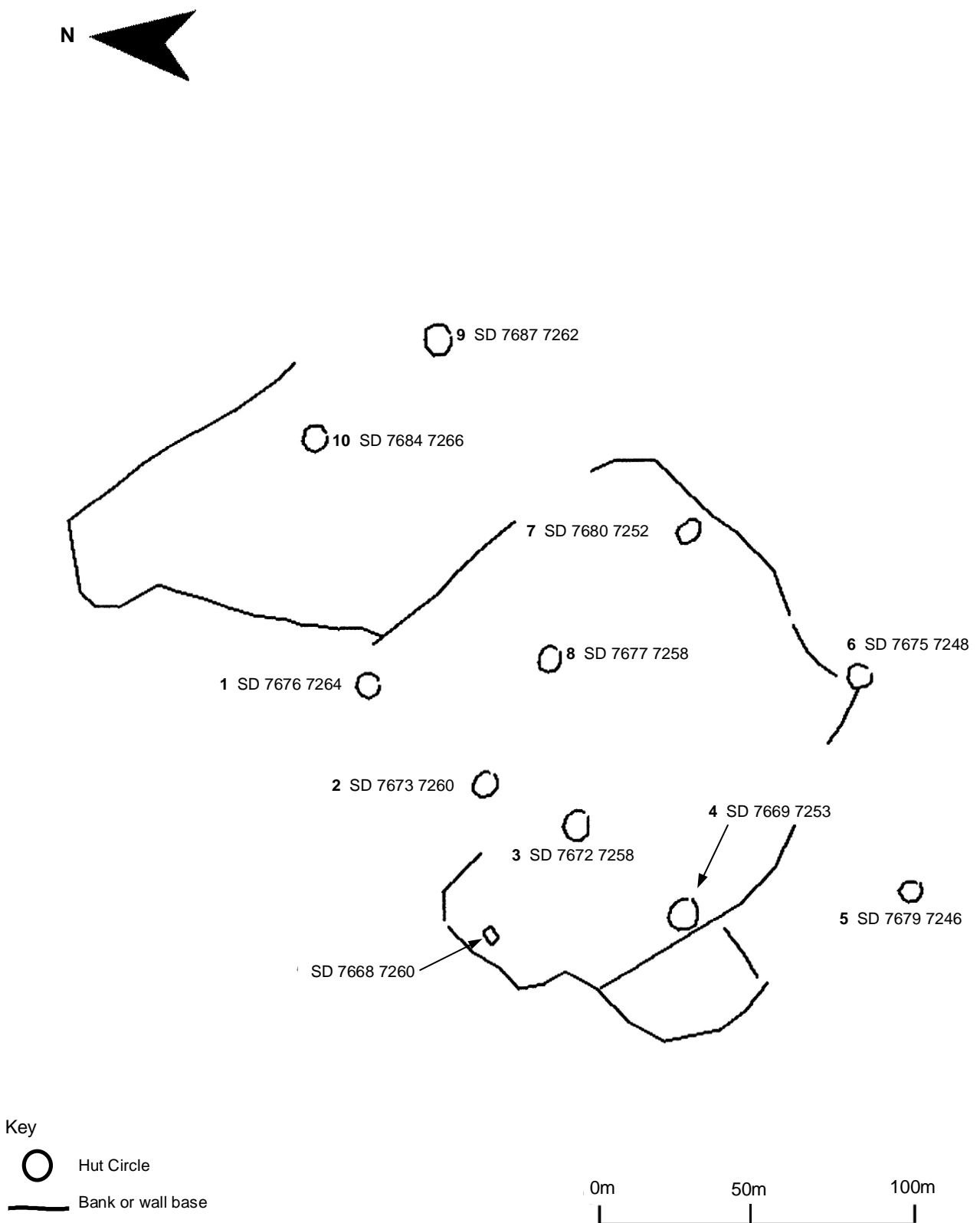


Fig 1: Topographical survey showing location of ten hut circles and one small rectangular building.

Calibration Plot

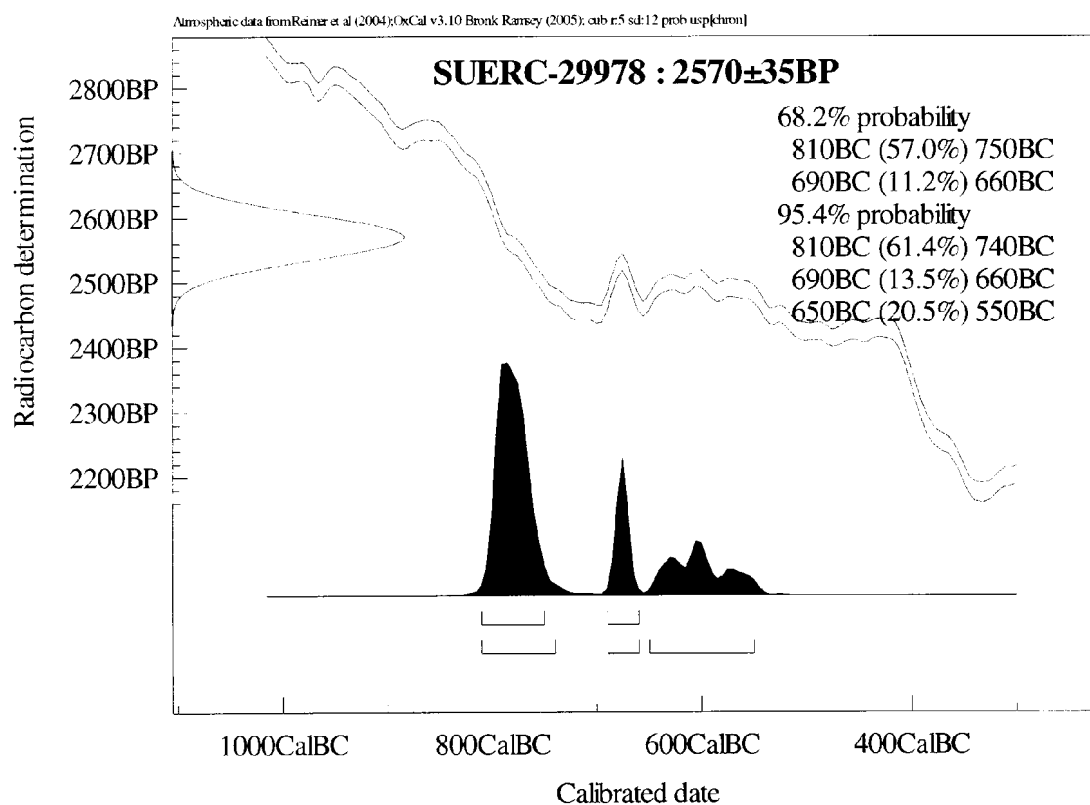


Fig 2: Radio carbon dating chart. Ref: SUERC-29978 (GU-21725)

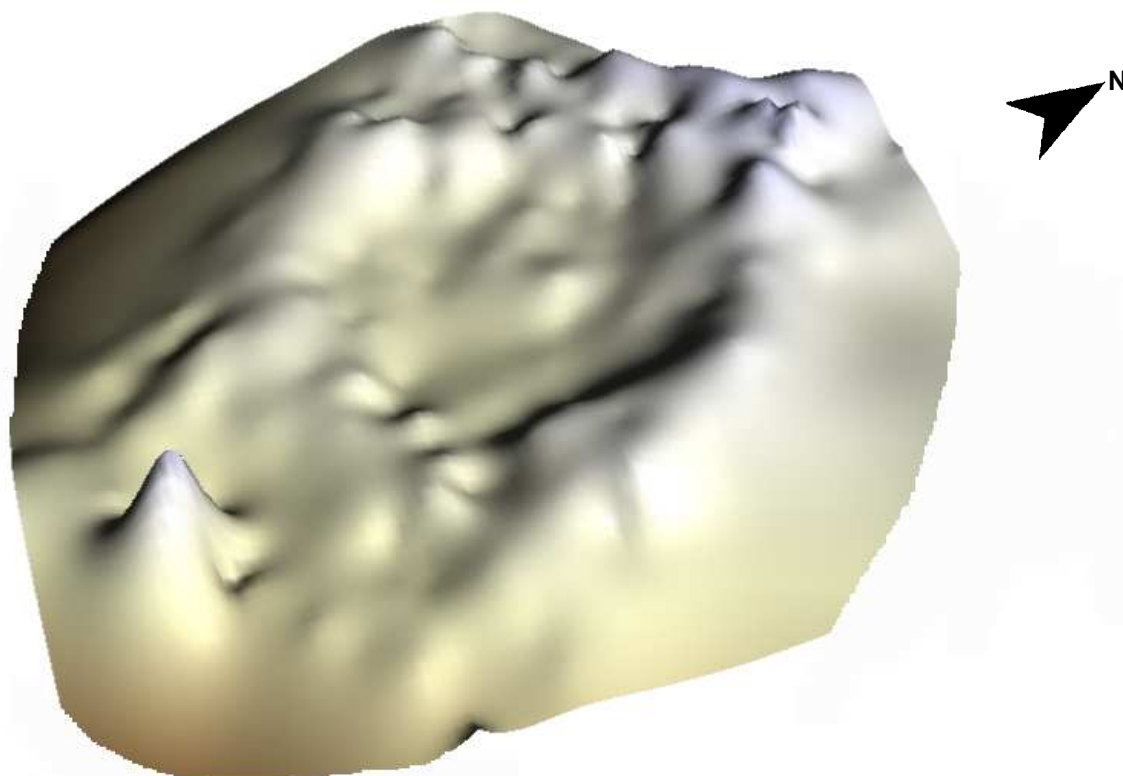


Fig 3: 3D topological survey of hut circle No. 4



Plate 1: Showing limestone pavement and escarpment with hut circle No. 1 in the centre foreground. *Photo Arthur Batty*



Plate 2: Showing hut circle No. 2

Photo: Arthur Batty